

How to upgrade firmware (xxx.bin)?

1. On viewlink, serial port connection

Use USB to TTL serial cable to connect the Viewpro Gimbal Camera serial port to the Windows system computer USB port.

The method to Viewpro Gimbal using

- Black wire GND ——Gimbal GND
- Green wire TX ——Gimbal RX
- White wire RX —— Gimbal TX
- Red wire 5V is reserved.

Diagram of Gimbal A Connected to Computer:

Baud Rate 115200, 8, 1 TTL

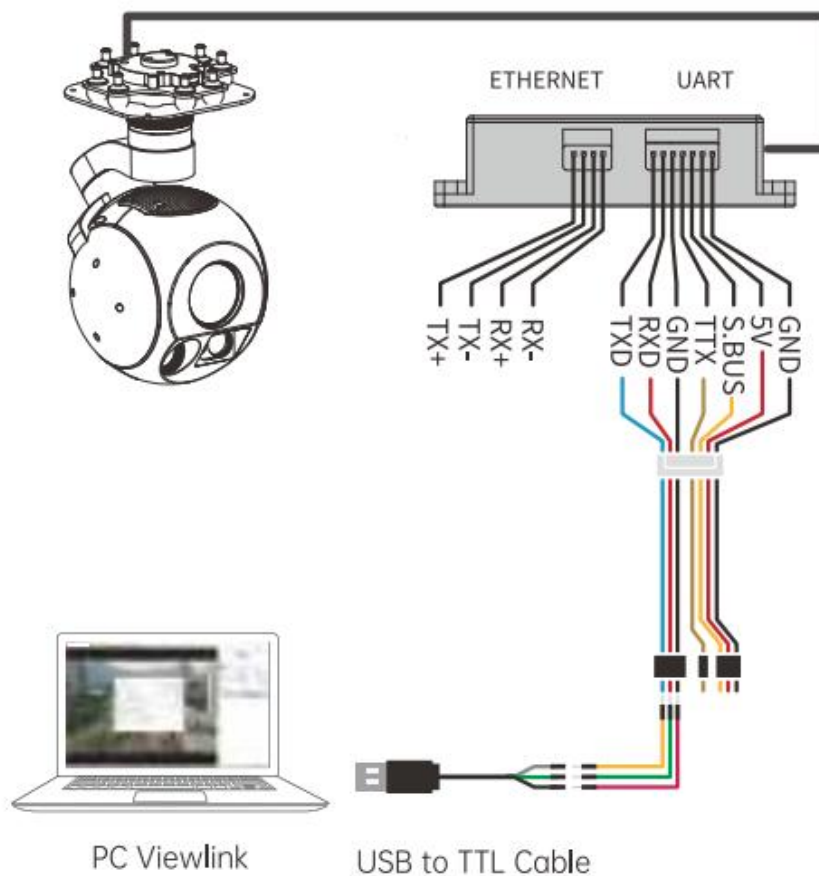
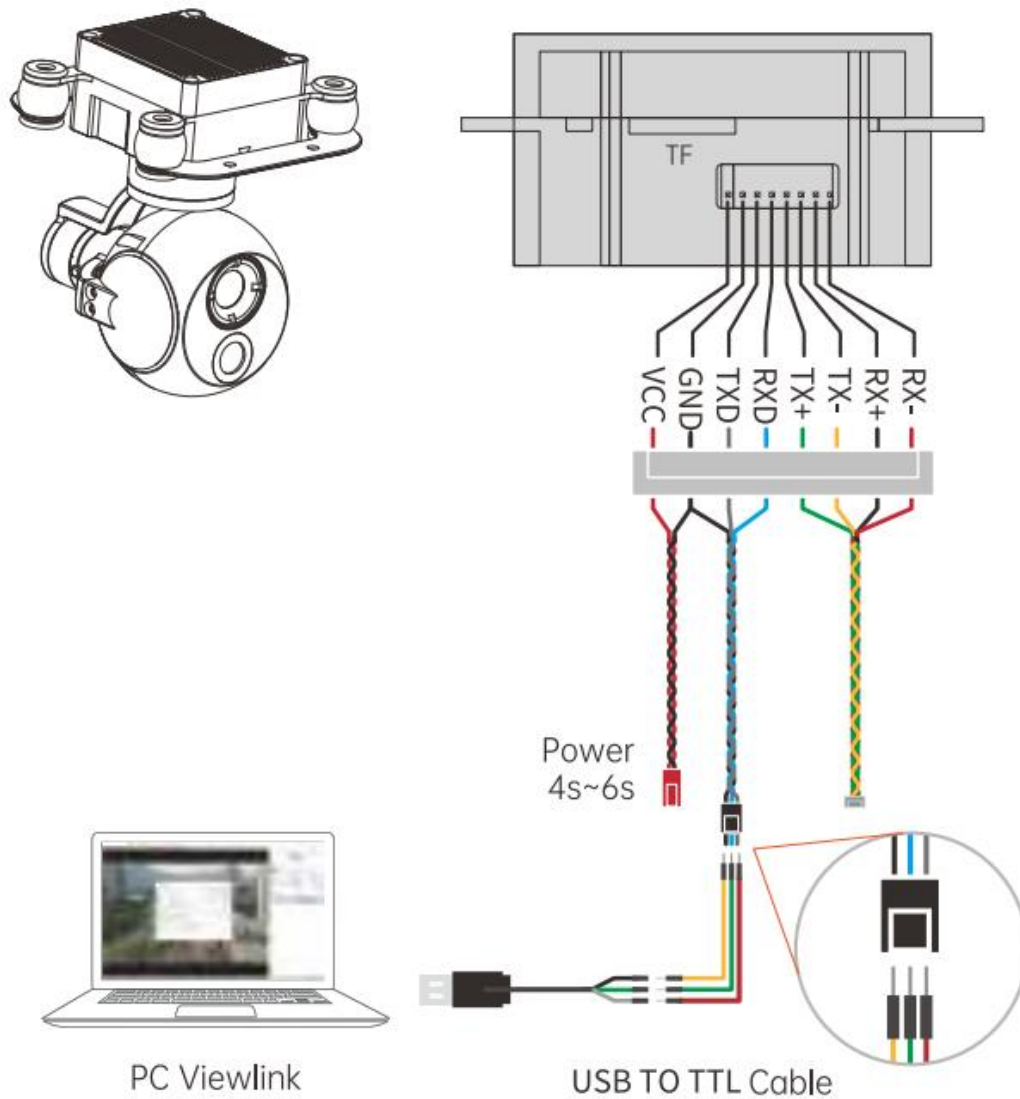
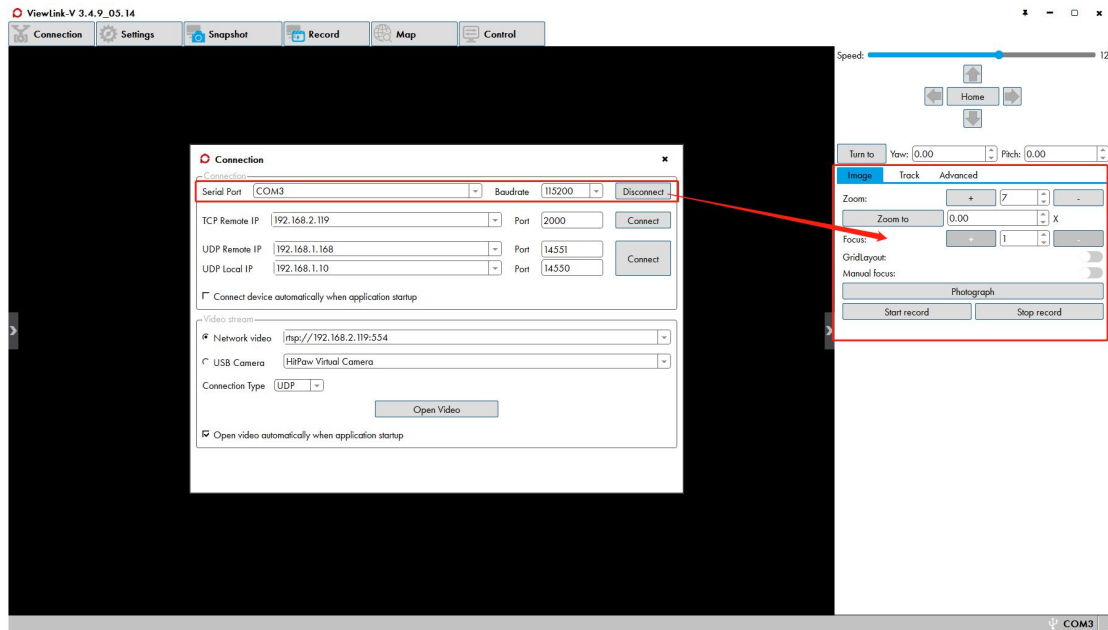


Diagram of Gimbal B Connected to Computer:

Baud Rate 115200, 8, 1 TTL

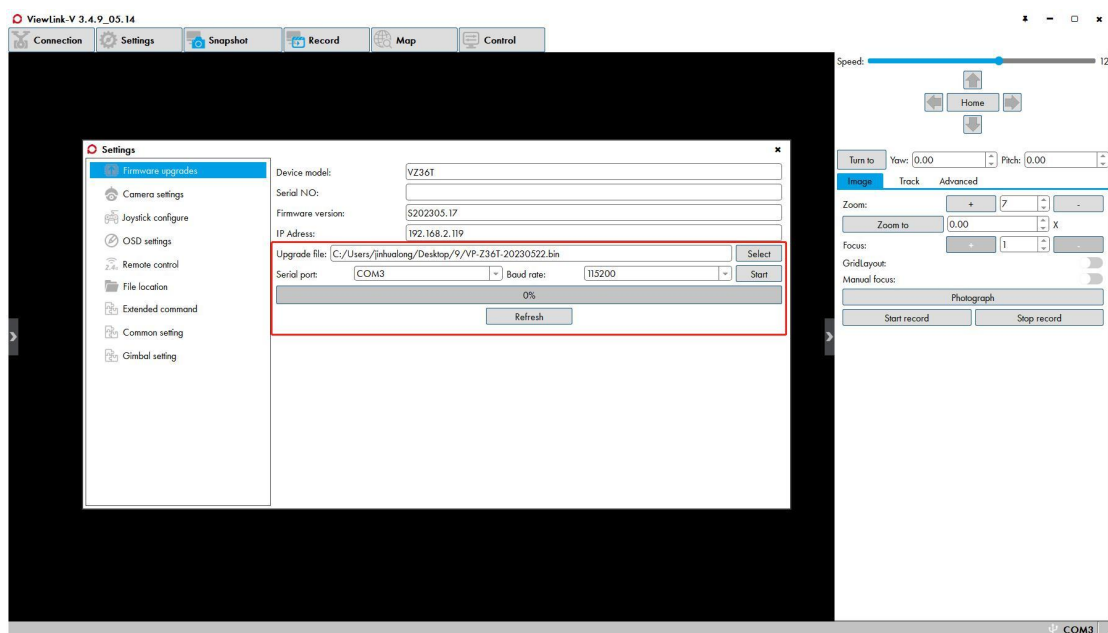


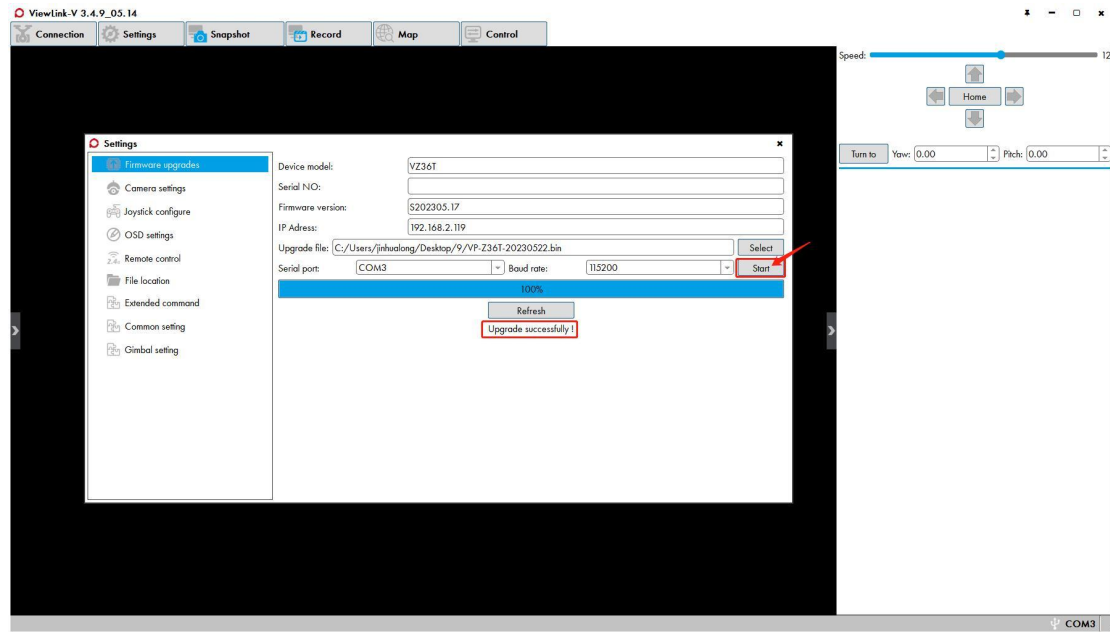
Then power on the Gimbal Camera , open the software interface, click "Connect" and select the corresponding serial port COMX on the computer equipment manager, the default baud rate is: 115200, and then click "Connect", the control bar corresponding to the Viewpro" Gimbal Camera model appears on the right side of the ViewLink interface, at this time the Gimbal Camera can control the gimbal and camera function.



2. Firmware Upgrades

Select the path to upgrade the firmware of the CONN board on the computer at the "Upgrade File", click "Open" after checking, click "Start" to start the upgrade, the progress bar on the software will show from 0% to 100%, prompting "Upgrade successful".





3. Reboot the gimbal.